



**THE REPUBLIC OF THE PHILIPPINES**  
**ASSESSMENT STATEMENT**  
**ASEAN CHARTERED PROFESSIONAL ENGINEER**

**INTRODUCTION**

**1. *ASEAN Mutual Recognition Arrangement (MRAR) on Engineering Services:***

The Governments of Member Countries of the Association of South East Asian Nations as “ASEAN”; Brunei Darussalam, the Kingdom of Cambodia, the Republic of Indonesia, Lao People’s Democratic Republic, Malaysia, the Union of Myanmar, the Republic of Philippines, the Republic of Singapore, the Kingdom of Thailand and the Socialist Republic of Vietnam, have agreed on the ASEAN Mutual Recognition Arrangement (MRAR) on Engineering Services with the following objectives;

- a) To facilitate mobility of engineering services professionals; and
- b) To exchange information in order to promote adoption of best practices on standards and qualifications.

**2. *ASEAN Chartered Professional Engineer (ACPE)***

- 2.1 A professional engineer who holds the nationality of an ASEAN Member Country and who possesses qualifications and experience to comply with the requirements specified in Part B of this Assessment Statement may apply to be registered on the ASEAN Chartered Professional Engineer Register (ACPER) and accorded the title of ASEAN Chartered Professional Engineer (ACPE).
- 2.2 Under the ASEAN MRAR, the Professional Regulatory Authority (PRA) of each participating ASEAN Country or in the case of the Philippines, the Professional Regulation Commission (PRC) shall authorize a Monitoring Committee (MC) to receive and process applications from its professional engineers for registration as ACPE, and to maintain the ACPER.
- 2.3 Pursuant to a Memorandum of Agreement (MOA) signed between and among Professional Regulation Commission (PRC), Commission of Higher Education (CHED) and Philippine Technological Council (PTC), the ASEAN Monitoring Committee on Engineering Services for the Philippines (AMCESP) was created to serve the function of the Monitoring Committee for the Philippines.

2.4 An ACPE who wishes to provide professional engineering services in any other participating ASEAN Country shall register to the PRC through AMCESP to be eligible as a Registered Foreign Professional Engineer (RFPE).

**3. *Purpose and Operation of Assessment Statement***

3.1 The Assessment Statement provides a framework for the assessment of professional engineers for registration on the ACPER by the AMCESP.

3.2 This Assessment Statement shall be reviewed and accepted by the ASEAN Chartered Professional Engineering Coordinating Committee (ACPECC) before the AMCESP is authorized to operate the ACPER.

**4. *Registered Foreign Professional Engineer (RFPE)***

4.1 A RFPE will be permitted to work, not as an independent practitioner, but in collaboration with a designated Filipino Registered Professional Engineer, subject to appropriate domestic professional regulatory laws.

**5. *Privilege and Obligations of a Registered Foreign Professional Engineer (RFPE)***

5.1 A RFPE may be allowed to practice in the Philippines in the profession permitted by PRC through the appropriate Professional Regulatory Board (PRB) upon compliance with the requirements set by their respective regulatory law and Section 7 paragraph (j) of the Republic Act No. 8981 (PRC Modernization Act of 2000).

5.2. As the PRC has statutory responsibility to register and/or license a practitioner so as to protect the health, safety, the environment and welfare of the community within its jurisdiction, it may require a RFPE seeking the right to practice to be subjected to some form of supplemental assessment which aims to determine that the RFPE:

- a) fully understands the general principles behind applicable codes of practice and laws in the Philippines;
- b) has demonstrated a capacity to apply such principles safely and efficiently; and
- c) is familiar with other special requirements implemented within the Philippines.

5.3 A RFPE shall provide engineering services only in the areas of competence as may be recognized and approved by PRC through the appropriate PRB, and shall undertake assignments only in the specific profession in which he has been registered. He shall also be bound by:

- a) codes of professional conduct and ethics established and enforced by the Philippines in which he is registered as ACPE; and

- b) prevailing laws and regulations of the Philippines, including its corresponding administrative and penal provisions in which he is permitted to work as RFPE.

## **PART A: PROFESSIONAL REGULATORY AUTHORITY AND MONITORING COMMITTEE**

### **6. *Professional Regulatory Authority (PRA)***

- 6.1 The Professional Regulation Commission (PRC) is the Professional Regulatory Authority (PRA) in the Republic of the Philippines.
- 6.2 The PRC is a statutory body under the Republic Act No. 8981 (PRC Modernization Act of 2000) which is responsible for the administration, implementation and enforcement of regulatory policies on the regulation and licensing of various professions and occupations under its jurisdiction. It is the instrument of the Filipino people in securing for the nation a reliable, trustworthy, and progressive system of developing professionals whose personal integrity and spiritual values are solid and respected, whose competencies are globally competitive, and whose commitment to serve the Filipino nation and the whole community is strong and steadfast.

### **7. *Engineering Professions***

- 7.1 The Philippines has 12 regulated engineering professions under PRC, namely:
- Aeronautical Engineering
  - Agricultural Engineering
  - Civil Engineering
  - Chemical Engineering
  - Electrical Engineering
  - Electronics Engineering
  - Geodetic Engineering
  - Mechanical Engineering
  - Metallurgical Engineering
  - Mining Engineering
  - Naval Architecture and Marine Engineering
  - Sanitary Engineering
- 7.2 Other professional activities not specifically within the defined scope of practice by the professional regulatory laws of the aforementioned twelve (12) engineering professions shall be referred to the AMCESP for determination whether the activity may be divided or broken down so as to qualify the same under the existing regimes.

**8. *The Monitoring Committee (MC)***

- 8.1 The ASEAN Monitoring Committee on Engineering Services for the Philippines (AMCESP) is composed of the following: Professional Regulation Commission (PRC), Commission on Higher Education (CHED) and Philippine Technological Council (PTC). The committee members shall be nominated by the said institutions and shall be chaired by PRC.
- 8.2 The current members of AMCESP are shown in the Attachment 1.
- 8.3 The AMCESP is responsible for the development and maintenance of the ACPER as set out in the ASEAN MRAR on Engineering Services.
- 8.4 In assessing compliance with the qualifications and practical experience for registration as an ACPE, the AMCESP shall adhere to the criteria and procedures in this Assessment Statement.
- 8.5 The AMCESP shall ensure that all registered ACPEs comply with:
- a) the requirements specified in the ASEAN MRAR on Engineering Services; and
  - b) the Continuing Professional Education/Development (CPE/CPD) at a level prescribed in this Assessment Statement for its renewal of registration.

**9. *Authorization to Work as Registered Foreign Professional Engineers (RFPE)***

- 9.1 Special/Temporary Permit from PRC pursuant to Section 7 paragraph (j) of Republic Act No. 8981 and the appropriate professional regulatory law shall be secured before any RFPE can practice his profession in the Philippines.
- 9.2 The AMCESP shall monitor and assess the professional practice of the RFPEs to ensure compliance with the ASEAN MRAR.
- 9.3 The PRC may issue rules and prescribe fees which shall not contradict nor modify any of the provisions of the ASEAN MRAR, for the purpose of maintaining high standards of professional conduct and ethical practice in engineering.
- 9.4 The PRC will notify the ACPECC Secretariat promptly in writing when a RFPE has contravened the ASEAN MRAR or the Philippine laws and regulations.

## **PART B: ASSESSMENT MECHANISM**

### **10. Requirement for Registration as ASEAN Chartered Professional Engineer (ACPE)**

- 10.1 A professional engineer who meets all of the following qualifications and conditions is eligible for registration as an ACPE:
- a) completed an accredited and recognized engineering program by CHED;
  - b) possesses a current and valid professional registration or licensing certificate to practice engineering works in the Philippines by the PRC;
  - c) has acquired experience of not less than seven (7) years of active practice;
  - d) has spent at least two (2) years in responsible charge of significant engineering work;
  - e) has complied with CPE/CPD; and
  - f) has confirmed signature on statement of compliance with codes of ethics.
- 10.2 An application for registration as an ACPE shall be made in the format prescribed in Attachment 2 of this Assessment Statement to the AMCESP.

### **11. ASEAN Chartered Professional Engineer Assessment**

- 11.1 Assessment of compliance with the requirements set forth in Section 10 herein shall be undertaken by the appropriate PRB for recommendation to the AMCESP.

### **12. Audit of ASEAN Chartered Professional Engineer**

- 12.1 An ACPE is required to renew his registration every 3 years subject to the rules and regulations and prescribed fees.
- 12.2 All ACPE members are bound by its corresponding professional regulatory laws.
- 12.3 Every ACPE is required to comply with the prescribed units of CPE/CPD as set in Attachment 3 of this Assessment Statement.

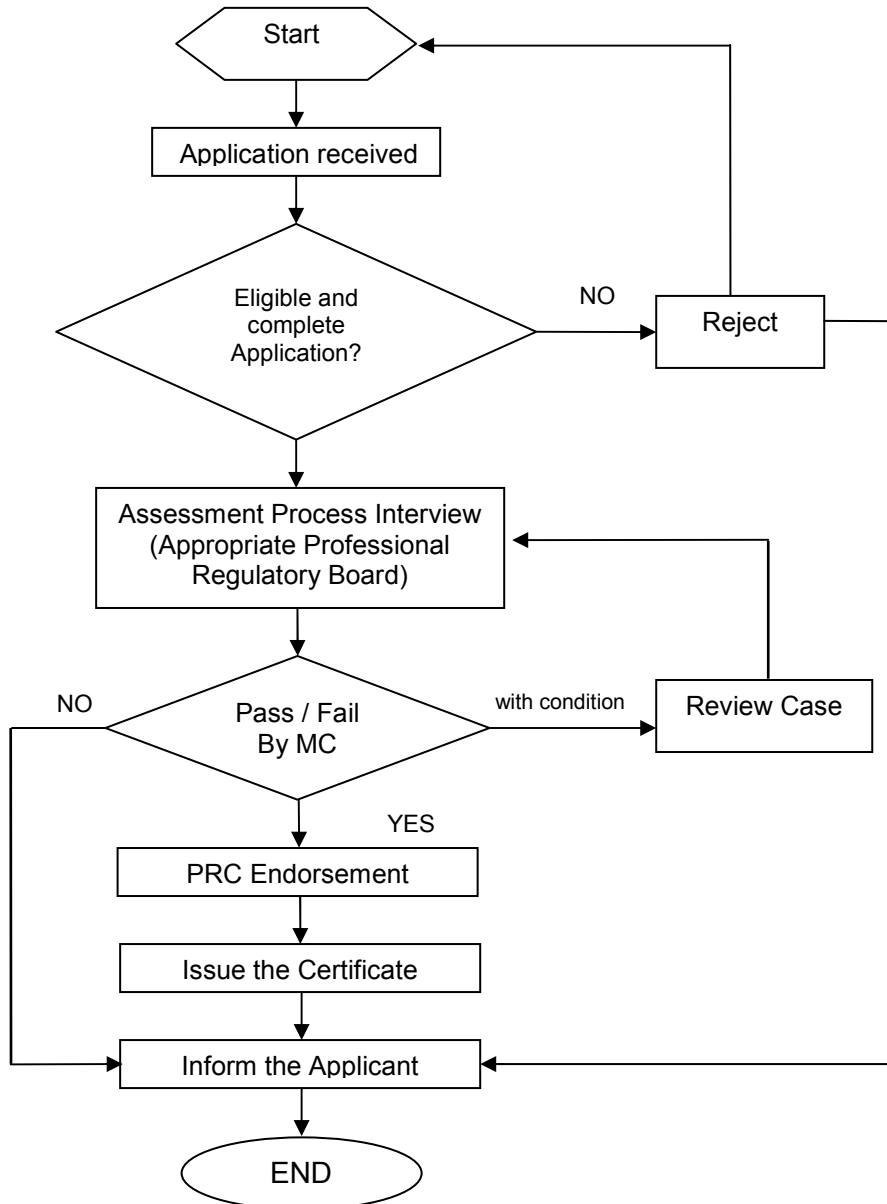
## **PART C: REGISTRATION PROCESS**

### **13. Registration Procedure**

- 13.1 This section describes the procedure involved in application for, or renewal of registration as ACPEs.
- 13.2 The procedure for application for registration of an ACPE should follow the flow chart as shown in Figure 1, which are as follows:
- a) Eligible and complete application for registration shall be submitted to the appropriate Professional Regulatory Board for assessment and process interview.

- b) The appropriate Professional Regulatory Board will endorse the same to AMCESP for its evaluation and subsequent endorsement to PRC.
- c) A membership certificate of registration will be issued to the successful applicant with a validity of 3 years from the date of registration, and shall be renewed on a 3 – year basis.

Figure 1 Registration Procedure Flow Chart



**14. *Guide to Application for Registration as ACPE***

- 14.1 A professional engineer who is qualified to apply for registration as ACPE shall submit his application in the form as shown in Attachment 2.
- 14.2 The Applicant who is eligible to practice in specific engineering profession would be reviewed by the AMCESP for compliance.
- 14.3 Professional interview, if necessary, may be conducted by the appropriate PRB to assess the experience in engineering. In such case, the AMCESP will inform the Applicant of the date, time and venue of the interview.
- 14.4 The appropriate PRB will prepare and submit its recommendations to the AMCESP. The AMCESP will check to ensure that there is no discrepancy and inadequacy in the assessment procedures.
- 14.5 The AMCESP will ensure that documents containing information on its assessment of the Applicants for registration on the ACPE are available when requested by the ACPECC for purposes of review as required under the ASEAN MRAR.

**The Current Monitoring Committee is composed of the following:**

- |    |   |          |
|----|---|----------|
| 1. | Professional Regulation Commission,<br>Commission Proper Representative | Chairman |
| 2. | Engineering Professional Regulatory Board Representative                | Member   |
| 3. | Engineering Professional Regulatory Board Representative                | Member   |
| 4. | Commission on Higher Education  | Member   |
| 5. | Philippine Technological Council  | Member   |

The contact office:

2/F, International Affairs Division, Professional Regulation Commission (PRC)  
P. Paredes St., corner N. Reyes St., Sampaloc, Manila, Philippines 1008  
Telephone: +63 2 314-00-19                      Facsimile: +63 2 314-00-19  
E-mail: [prc.iad@gmail.com](mailto:prc.iad@gmail.com); [prciad@yahoo.com](mailto:prciad@yahoo.com); [lrdlouis@yahoo.com](mailto:lrdlouis@yahoo.com)



No. \_\_\_\_

**APPLICATION FORM FOR ASEAN CHARTERED PROFESSIONAL ENGINEER (ACPE)**

1. Name \_\_\_\_\_ Surname \_\_\_\_\_ Age \_\_\_\_ yrs. Nationality \_\_\_\_\_  
2. License/Registration No. \_\_\_\_\_ Issued on \_\_\_\_\_ Expiration date \_\_\_\_\_  
3. Home address \_\_\_\_\_  
\_\_\_\_\_

Province \_\_\_\_\_ Postcode \_\_\_\_\_  
Tel./Fax \_\_\_\_\_ E-Mail \_\_\_\_\_

4. Office address \_\_\_\_\_  
\_\_\_\_\_ Province \_\_\_\_\_ Postcode \_\_\_\_\_  
Tel./Fax \_\_\_\_\_ E-Mail \_\_\_\_\_

5. Education (Provision of Evidence)

- 5.1 \_\_\_\_\_ Institute \_\_\_\_\_ Year \_\_\_\_\_  
5.2 \_\_\_\_\_ Institute \_\_\_\_\_ Year \_\_\_\_\_  
5.3 \_\_\_\_\_ Institute \_\_\_\_\_ Year \_\_\_\_\_  
5.4 \_\_\_\_\_ Institute \_\_\_\_\_ Year \_\_\_\_\_

I, hereby, certify that the above information is correct.

(Signature) \_\_\_\_\_ Applicant  
Submission date \_\_\_\_\_

**For Official Use Only**

Date of meeting \_\_\_\_\_ Result \_\_\_\_\_  
ACPE No \_\_\_\_\_ Discipline \_\_\_\_\_  
Date of Approval \_\_\_\_\_ Expiration \_\_\_\_\_  
**Registration Fee Payment** Book No. \_\_\_\_\_ No. \_\_\_\_\_  
Date \_\_\_\_\_ Amount \_\_\_\_\_  
\_\_\_\_\_ Cashier \_\_\_\_\_ Secretary General

**PROFESSIONAL PRACTICE RECORD**

| <b>Item No.</b> | <b>Date/Month/<br/>Year of<br/>Practice</b> | <b>Job Position/Company or<br/>Firm</b> | <b>Project Name/Description of Works</b> |
|-----------------|---|---|--|
|                 |   |   |  |

- Note:**
- 1. The applicant must have experience not less than seven (7) years of active practice**
  - 2. Enclose together with the application form and the table showing quantity and quality of professional engineering works.**

### **Continuing Professional Education (CPE)**

The Professional Regulation Commission of the Republic of the Philippines (PRC) has set the activities that engineers can take for their continuing professional education (CPE). Those activities are counted as the Continuing Professional Education Unit (CPEU) and are divided into 8 items as follows:

1. Formal learning
2. Informal learning
3. Seminar, conference and meeting
4. Participation in professional activities
5. Service activities
6. Industry involvement
7. Contribution to knowledge
8. Patents

Different activities however have different weights of score attached to them, see details in the Committee Rules on Continuing Professional Education (CPE) in the Attachment 4.

### Committee Rules on Continuing Professional Education (CPE)

#### Continuing Professional Education Unit (CPEU)

The Professional Regulation Commission of the Republic of the Philippines (PRC) has set the activities that engineers can take for their Continuing Professional Education (CPE). We count the activities as the Continuing Professional Education Unit (CPEU). The Activities are divided into 8 items as follows:

1. Formal learning
2. Informal learning
3. Seminar, conference and meeting
4. Participation in professional activities
5. Service activities
6. Industry involvement
7. Contribution to knowledge
8. Patents

All of the activities have different weights of score attached to them. The PRC has set the score according to the activities as the table below.

Table 1. Activities, the regulation for counting the CPEU

| No. | Activity   | Sub-activity           |  | Regulation                                      | weight |
|-----|--|------------------------|--|---|--------|
| 1   | <b>Formal learning</b><br><br>Maximum 40 CPEU.<br>Minimum attendance time is 80%. (Lectures and speakers are not required to attend 80% of formal learning time) | 101                    | Courses taken in the University / College / Institute of Technology (higher than Bachelor's degree). | Count by course hours.                          | 2.0    |
|     |  | 102                    | Training courses with examinations organized by organizations approved by PRC.                       | Pass the examination,<br>Count by course hours. | 2.0    |
|     |  |                        |  | Fall the examination.<br>Count by course hours. | 1.5    |
|     |  | 103                    | Training courses approved by PRC.  | Count by course hours.                          | 1.5    |
|     |  | 104                    | In- house training approved by PRC.  | Count by course hours.                          | 1.0    |
| 105 | Other training courses organized by other non-engineering units approved by government units.  | Count by course hours. | 1.0  |   |        |

| No | Activity   | Sub-activity | Regulation  | weight  |     |
|----|--|--------------|---|---|-----|
| 2  | <b>Informal learning</b><br>Maximum 20 CPEU.                                   | 201          | Self study with report or activity manual in new work involving high technology   | Count two hours per page of report or activity manual | 1.0 |
|    |  | 202          | Technical visit   | Count by visiting hours, excluding traveling time.    | 0.5 |
| 3  | <b>Participation in seminars, conferences and meetings.</b><br>Maximum 30 CPEU | 301          | Attending seminars and academic or professional conferences in the country.   | Count by the seminar or conference hours.             | 1.0 |
|    |  | 302          | Attending meetings as a committee or sub-committee member concerning academic or professional practice in the country.  | Count by attending hours.                             | 1.0 |
|    |  | 303          | Attending international academic or professional seminars or conferences.   | Count by the seminar or conference hours.             | 1.5 |
|    |  | 304          | Attending international meetings as a committee or sub-committee member concerning academic or professional practice.   | Count by attending hours.                             | 1.5 |
| 4  | <b>Participation in professionals activities</b><br>Maximum 30 CPEU            | 401          | Being a member of academic or professional societies accredited by PRC.   | Count 10 hours per society.                           | 1.0 |
|    |  | 402          | Being a committee of academic or professional societies accredited by PRC. (Must attend a meeting at least 50% of total number of meetings.)                      | Count 10 hours per society.                           | 2.0 |
|    |  | 403          | Being a sub-committee or working group of academic or professional societies accredited by PRC. (Must attend a meeting at least 50% of total number of meetings.) | Count 10 hours per society.                           | 1.5 |

| No. | Activity   | Sub-activity |   | Regulation   | weight |
|-----|--|--------------|---|--|--------|
| 5   | <b>Engineering service activities</b><br><br>Maximum 40 CPEU | 501          | Being various academic committees concerning program of study of universities.  | Count by hours of participation.   | 2.0    |
|     |  | 502          | Being a member or a committee of a Continuing Professional Development program.   | Count 10 hours per program   | 2.0    |
|     |  | 503          | To participate in the process of setting up and inspecting a Continuing Professional Development program.                                   | Count by hours of participation.   | 2.0    |
|     |  | 504          | Consider technical aspects of various engineering works, such as, consider and review ministry acts, standards of industrial products, etc. | Count by working hours.  | 2.0    |
|     |  | 505          | Being a committee of research projects at Bachelor. Master and Ph. D. levels in other universities where you do not belong.                 | Bachelor: count 5 hours per project.<br>Master and Ph. D.: count 10 hours per project. | 1.0    |
| 6   | <b>Industry Involvement</b><br><br>Maximum 40 CPEU           | 601          | Consultancy services to industrial sector.  | Count 10 hours per project.  | 1.0    |
|     |  | 602          | Research for industrial sector.   | Count 10 hours per project.  | 2.0    |

| No. | Activity  | Sub-activity | Regulation  | weight   |                                    |
|-----|---|--------------|---|--|------------------------------------|
| 7   | <b>Contribution to Knowledge</b><br><br>Maximum 40 CPEU | 701          | Developing the Code of Practice.  | Count 5 hours per page for author.<br>Count 2 hours per page for reader. | 1.0                                |
|     |   | 702          | Research, presentation, and writing articles in journals with peer review to be published in the country. | Count 5 hours per page of the article.<br>Count 40 hours per book.       | 1.0                                |
|     |   | 703          | Research presentation and writing articles in international journals with peer review.                    | Count 5 hours per page of the article.<br>Count 40 hours per book.       | 1.5                                |
|     |   | 704          | Research, presentation and writing articles in journals without peer review.                              | Count 5 hours per page.  | 0.5                                |
|     |   | 705          | Being a reviewer of articles to be published in the country.  | Count 5 hours per page.  | 1.0                                |
|     |   | 706          | Being a reviewer of articles to be published internationally.   | Count 5 hours per page.  | 1.5                                |
|     |   | 707          | Being a lecturer of training courses with examination.  | Count by lecture hours.  | 2.0                                |
|     |   | 708          | Being a lecturer of training courses without examination.   | Count by lecture hours.  | 1.5                                |
|     |   | 709          | Being a lecturer of seminars and conferences.   | Count by lecture hours.  | 1.0                                |
|     |   | 8            | <b>Engineering Patents</b><br><br>Maximum 50 CPEU   | 801  | Patenting engineering innovations. |